



July 2018

P.O. Box 4631  
Walnut Creek, CA 94596  
www.californiawatercolor.org  
email: info@californiawatercolor.org

# California WATERCOLOR Association

General Meeting: 7:30pm, Wednesday, July 18, 2018 • Center for Community Arts, 111 N. Wiget Lane, Walnut Creek, CA

## July Guest Artist Iain Stewart



The Commute-Edinburgh (top) and Oppede Le Vieux-Provence (right) by Iain Stewart

Iain Stewart is a watercolor artist/illustrator and a signature member of the National Watercolor Society. His work has received numerous awards in international competition; Iain is a sought-after juror and workshop instructor in the US as well as abroad. His work has received top awards in international competitions. Iain relies on instinct a great deal and much of his work is done “alla prima” as he attempts to capture his initial vision. He focuses more on capturing the lighting and its influence on shape and value rather than faithfully representing the subject. Per Stewart, watercolor is uniquely suited for this task as “light” is reserved from the first brush strokes and must be protected throughout the painting process.

The underlying narrative in his work is not based on any theme in particular but quite simply how “place” is inhabited and used daily.

He often uses remembered atmospheric and lighting conditions in his work and says that he paints from life and memory simultaneously. His watercolors are not only a translation of what he sees, but more importantly, an expression of how he chooses to view the world.

Learn more about Iain at his website:  
<http://www.stewartwatercolors.com/>

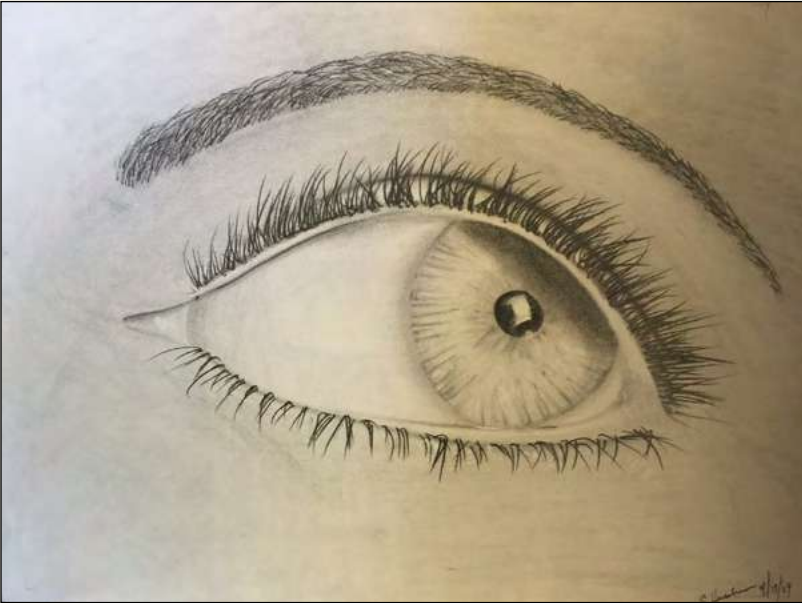


### contents

- 1**  
Iain Stewart  
July Guest Artist
- 2**  
From the President
- 3-4**  
CWA Members Show  
Explore Color.  
Discover Color!
- 5**  
Outreach
- 6-7**  
CWA Members Show  
“Change of Seasons”
- 8**  
CWA 49th National Exhibition  
Member Announcements  
Show News
- 9**  
CWA Workshop Series
- 10-11**  
CWA Member Show  
“The Color of Summer”
- 12-15**  
Plein Air
- 15**  
Dale Laitinen Demo  
Directors  
Committees  
Staff
- 16**  
Calendar



## from the president California Watercolor Association



**“Art does not reproduce what we see.  
It makes us see.”**

***Paul Klee***

How simple, but think about Paul Klee’s statement. Whether a studio artist, plein air artist, or both, we as artists tend to “see” what others don’t. We also “see” and remove to “see” less. We often try not to “see!” We use view finders to limit the amount of what is in front of us. We are constantly “seeing” for the next body of work. We squint to “see” better! What!?!?!? Yes, squint to “see” better.

As artists, we walk around the world always looking for the next painting. We ask ourselves is what we are seeing of any interest? Is it interesting enough to paint? What will others “see” if we paint the scene in front of us?

Go out and “see,” paint and show the world a different way to “see!”

*Carol Husslein*  
CWA President



## CWA Members Show | Explore Color. Discover Color!

August 5, 2018 – January 31, 2019

**ENTRY DEADLINE: July 6, 2018**

Awards: 1<sup>st</sup> \$100, 2<sup>nd</sup> \$75, 3<sup>rd</sup> \$50 and Four Honorable Mentions

**Dominican University**

50 Acacia Avenue, San Rafael, CA 94901

CWA has been invited by Sandi Chin to have a show at Dominican University in San Rafael. Sandi is Dominican's Director of University Community Exhibitions and Adjunct Professor of Art History.

The show will be in a building that houses the Science Department at Dominican University. The exhibit will be displayed in glass cases that line the hallways of the building's main floor. The paintings will be protected behind the (locked) glass doors of the vitrines and so, they will not need to be framed. The space in these glass cases is such that this show will be for quarter sheet paintings only. Each painting submitted **must** be 11"x15" and should be matted only. More about matting below.

As this show will be in a Science Building, we will use one of the glass cases for an exhibit about the discovery of colors. Especially during the Industrial Revolution, many new elements were added to the Periodic Table. These scientific discoveries led to an equally large increase in the number of dyes, paints and artists colors. By having an exhibit about the science of color, hopefully the science students will gain a better appreciation and awareness of the paintings and colors that will grace their hallways.

### Jurors

**Jurors of Selection — Sandi Chin and Iretta Hunter, MCWA**

**Juror of Awards — Sandi Chin**

### Show Calendar (Save these Dates)

July 6	Entry deadline
July 12	Notifications emailed to all accepted artists and posted on CWA website.
July 18	6:00pm - 7:15pm: Artwork drop-off at Shadelands Auditorium*
August 5	Juror's Award selection Sandi Chin
August 5	Show opens
August 18	Artist Reception & Awards from 2:00 - 4:00pm
October 10	Students' peoples-choice award chosen and announced
January 31	Show closes 4:00pm - yes, that's in 2019.
February 20	Pick up paintings at Shadelands Auditorium* (6:00pm - 7:15pm)

\*Shadelands Auditorium is at 111 N. Wiget Lane, Walnut Creek

### Eligibility

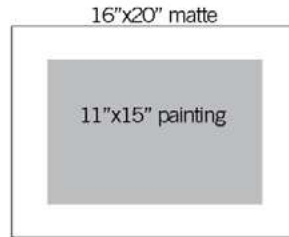
This CWA Members Show is open to **ALL** CWA Members 18 years or older. Paintings must be two-dimensional and primarily watermedia on paper surface; Yupo and Tyvek are acceptable. Pastel or collage may be used as long as watermedia is the dominant medium. Digital media, photography, prints, or reproductions are not acceptable. The source material and composition of submitted work must be wholly original and not derived from any published images. Entries must be entirely the work of the artist, and not shown previously in a CWA Members Show. No workshop or class work allowed. All paintings must be for sale. Subject matter that may be objectionable to the public (e.g., nudity, obscenity, and extreme political/religious views) will be disqualified from judging. CWA reserves the right to refuse any artworks of inappropriate subject matter.

*continued on page 4*

continued from page 3

### Size Limits

Minimum image: This show is limited to quarter sheet paintings. Paintings must be 11"x15" and must be matted in a 16"x20" bright white mat, no other size will be accepted for this show. The paintings must be **horizontal only**. This is to ensure that the paintings will fit in the vitrine spaces.



### Online Entries Only

All entries will be submitted via our website, [californiawatercolor.org](http://californiawatercolor.org). Members may enter two digital images in jpeg format, resolution 300 dpi, with 1200 pixels on the longest side, one painting per file. Show only the image without mat or frame.

Log in to the Members homepage, choose Shows/Exhibitions, then Member Shows and choose *Explore Color. Discover Color!*. Confirm your information, add your painting details and upload your images.

### Entry Fees (non-refundable)

Entry fee is payable by PayPal, credit, debit, or individual account.  
CWA Members: \$30 for up to two images.

### Accepted Entries

All accepted artists will be notified by email and results will be posted online July 12, 2018. Because of the nature of this show (paintings matted only), all work must be hand-delivered to the Shadelands Auditorium in Walnut Creek.

Accepted work must match the submitted image; paintings not consistent with submitted image **WILL** be disqualified. The acceptance email will include all instructions for delivering the accepted painting to Shadelands Auditorium in Walnut Creek. Please note; Delivery for this show is hand-carry only...unfortunately shipping of paintings will not be allowed for this show.

### Framing

For this show, there is no framing needed or allowed. The quarter sheet paintings will be protected behind glass in the (locked) vitrines of the Science Building. Each 11"x15" painting must be matted only in a bright white mat (no colored liners, please) measuring 16"x20." The back of each matted painting should have a white foamcore backer. This will be the only format accepted for this show.

### Sales

All sales will be made through the artist. All paintings must remain for the duration of the show. CWA will retain a 25% commission on all work sold. Dominican University does not take a commission on work that is sold, they would appreciate a donation percentage at the artist's discretion.

### Conditions and Liabilities

No work may be withdrawn before the end of the Show. CWA and Dominican University reserve the right to photograph artwork or copy images for promotional purposes. Insurance coverage during transport is the artist's sole responsibility. Dominican University provides insurance for the artwork while it is in their possession. The submission of entries to this show shall constitute an agreement on the part of the artist to the terms and conditions as set forth in this prospectus. Each accepted artist will also receive a Dominican loan agreement to sign and return with the artwork.

### Questions

Please email: [mail@michaelfriedland.com](mailto:mail@michaelfriedland.com)  
Contact: Michael Friedland 415 505 3399  
To enter: [californiawatercolor.org](http://californiawatercolor.org) - then [Members Home Page](#)



# Community Outreach VA Oakland

## Oakland Vets Paint Surrealistic Lemons

Surrealistic lemon-landscape was the concept for the Community Outreach session for the Oakland veterans. The idea was inspired by the René Magritte exhibition showing at the San Francisco Museum of Modern Art, now through October 28, 2018.

We began with real lemons and few samples of Magritte's paintings to put the surreal, dream-like idea across. The "paint along" of sky, clouds, oversized lemons and land moved quickly. The vets took up the concept and with their brushes made it their own. The results were lemonade, submerged lemons, levitating lemons and in one painting even a wandering ant was included.

The concluding critique generated a number of smiles and comments on the fine show of imagination.

P.S. A special thanks to volunteer, Libby Erickson, for assisting at the Oakland VA for two years.

*Sheila Cain*





# Call for Entries

California Watercolor Association Members Show

## “Change of Seasons”

September 1 – September 28, 2018

Lindsay Dirx Brown Gallery @ San Ramon Community Center

12501 Alcosta Blvd., San Ramon, CA 94583

**ENTRY DEADLINE: August 10, 2018**

Awards: 1<sup>st</sup> \$100, 2<sup>nd</sup> \$75, 3<sup>rd</sup> \$50 and 4 Honorable Mentions



**Juror of Acceptance—Linda Sutton:** ldsutton.com. Linda is an award winning “Plein aire” painter, painting on location is habit. Transparent watercolor was initially learned outside on location. “Being there” instigates adventurous diversity, and often opportunities to collect exciting new references. In December 2008, a trip to three locations in Kenya allowed exploration of new animals, light, and environments. Frequent live figure drawing provides continued growth of classic and creative drawing skills, relating to the animal forms, where accurate representation is a valid expectation. Using traditional art elements, and designing with significant contrasts, atmosphere can be created. Manipulating relationships between abstraction and realism engages the imagination into capturing the essence of a place, or subject, now more personal to the viewer. Imaginations are enticed with just enough realism to draw them into, then send beyond the two dimensional surface. Linda currently teaches adult classes and workshops in Transparent Color Theory, handling the “wet and wild” medium as brave color relationships. She taught for ten years at Walnut Creek Civic Arts, developing and instructing lessons in art principals for adults, and junior and senior high school students.



**Juror of Awards—Ruth Miller:** ruthmillerwatercolors.com. Ruth has used her skills both as a professional artist and as a teacher in the San Ramon Valley. She has studied with many prominent artists: Marianne Brown, John Salminen and Jane Hofstetter to name a few. She exhibits her work through the Alamo Danville Art Society, California Watercolor Association, the Valley Art Gallery and the Triton Museum. Ruth has earned many honors and awards both locally and nationally. She has earned her Signature Membership in CWA and SDWS. This accomplishment requires acceptance into three of their national juried shows. She paints cityscapes, landscapes and florals from photos she has taken while traveling. Ruth is a retired kindergarten teacher but continues to teach art to children in her local school district. She has developed her own art history program for 5-10 year olds. The children love to paint just like Monet, Picasso, O’Keefe and Haring. She has been instrumental in raising funds for art programs and materials in her school district. Ms. Miller is happy to accept commissioned artwork. She loves creating a painting from her clients’ photographs, producing unique and exciting travel souvenirs. Please check her web site for ideas and examples.

### Show Calendar (save these dates)

<b>August 10, 2018</b>	<b>Painting Entry deadline</b>
August 18	Acceptance notification emails to all accepted artists and accepted list posted on our website.
<b>August 31</b>	<b>Artwork drop off at the gallery: 10:00am to 1:00pm</b>
	Artist check-in, hand-deliver paintings, label validation.
	<b>Hang paintings: 1:00pm to 5:00pm</b>
September 1	Juror’s award selection: 10:00am (Ruth Miller)
<b>September 1</b>	<b>Show opens: 1:00pm</b>
September 8	Artist Reception and Awards: 2:00pm - 4:00pm
<b>September 28</b>	<b>Show closes: 1:00PM</b>
	<b>Artists pickup paintings from the gallery: 1:00pm to 3:00pm</b>

## Venue

The Lindsay Dirx Brown Gallery is located at 12501 Alcosta Blvd, San Ramon, California. This gallery is large, vertically open, with two floors of well-lit space offering many options for display.

## Eligibility

The CWA Members Show is open to all CWA artists 18 years or older. Paintings must be two-dimensional and primarily watermedia on paper surface; Yupo and Tyvek are acceptable. Pastel or collage may be used as long as watermedia is the dominant element. No digital media, photography, prints, or reproductions. Source material and composition must be wholly original and not derived from any published images. Entries must be recent work completed within the last two years, entirely the work of the artist, and not shown previously in a CWA Member Show. **San Ramon Community Center has determined unsuitable for hanging any nudes or any subject which could be construed as being of a religious or political nature. No workshop or class work allowed.** All paintings must be for sale.

## Size Limits

Minimum image: 140 square inches, no side less than 10 inches. Maximum outside frame: 40"x40."

## Framing

All paintings must be framed in simple, square-cornered frames ready for hanging and protected under Plexiglas with foam core backing, wire ends taped and ready to hang. **No sawtooths, clamps or eye screws.** Mats (optional) must be white or off white. Colored liner mats are acceptable. Additional details may be included in instructions to accepted artists.

## Online Entries Only

All entries will be submitted via our website, [www.californiawatercolor.org](http://www.californiawatercolor.org). Artists may enter up to three digital images in jpeg format, resolution 300 dpi, with 1200 pixels on the longest side, one painting per file. *Show only the image without mat or frame.*

**CWA Members:** Log in to the Members Home page, choose Shows/Exhibitions>California Shows, confirm your information, and then add your painting details and upload your images.

## Entry Fees (non-refundable)

Entry fee is payable on PayPal by credit, debit, or individual account. CWA members: \$20 for one image, \$30 for a maximum of three images.

## Accepted Entries

All accepted artists will be notified by email, and results will be posted online August 18, 2018. Accepted work must match submitted image; paintings not consistent with submitted image may be disqualified. **All paintings must have labels attached to the back of the painting.** Labels are found on [www.californiawatercolor.org](http://www.californiawatercolor.org) >Membership >Forms > Labels for paintings.

## Sales

All sales will be handled by the artist. Lindsay Dirx Brown Gallery will retain a 20% commission, and CWA will retain a 10% commission.

## Conditions and Liabilities

No work may be withdrawn before the end of the Show. CWA and the Lindsay Dirx Brown Gallery reserve the right to photograph artwork or copy images for promotional purposes. Insurance coverage is the artist's sole responsibility, both in transit and during the Show. Neither CWA nor the Lindsay Dirx Brown Gallery insures the artwork and neither shall be responsible for loss or damage to any artwork submitted. The submission of entries to this show shall constitute an agreement on the part of the artist to the terms and conditions as set forth in this prospectus.

## Questions

Please email: [californiashows@californiawatercolor.org](mailto:californiashows@californiawatercolor.org)



49<sup>th</sup> National Exhibition  
California Watercolor Association  
**Call for Entries**



*Queensferry, Scotland* by Iain Stewart, Entry Juror

January 11 - February 16, 2019  
Harrington Gallery,  
Pleasanton

**\$14,000**  
in Anticipated Awards

Entry Deadline  
September 1, 2018

For Prospectus  
and Entry Form,  
[Click Here](#)



**ONLY 56 DAYS LEFT TO ENTER!**

## member announcements

### Donations for Community Outreach

Please bring and donate your gently used Art Magazines for resale to the General Meeting Magazine Table. The 25¢ per magazine proceeds are given and used for our Community Outreach Projects.

### Welcome New Members

Sylvia Ahern	Ellen Franke
Ellen Gordon	Karin Hartog
Marilyn J. Hughes	Wendy Lalanne
Deanna Merrigan	Meghana Mitragotri
Kelly Rhodes	Helene Roylance

*Annegret van Gemeren*

CWA Vice President, Membership Director

## show news

### 2018 HART Call for Entry is Open!

Event Dates: November 15 - December 30, 2018

Entry Deadline: August 26, 2018

Attention Artists: Foothill Art Center in Golden, Colorado, is seeking fine art and fine craft in all media suitable for HART 2018: oil, acrylic, water media, pastel, pencil, paper, printmaking, photography, digital arts, mixed-media, ceramics, jewelry, glass, fiber, metal, wood, edibles, and holiday-themed items. Artists are juried on their body of work and their artwork is shown by consignment only.

For more info, and to apply go to [tiny.cc/wtbzuy](http://tiny.cc/wtbzuy).





### Iain Stewart

3 Days | July 19-21

#### Painting Light in Watercolor

Advanced Beginner to Advanced

CWA Members \$415

Non-Members \$475

Iain's workshop will explore the medium of watercolor in a relaxing and creative environment. An Award-winning watercolorist, his sole focus will be bringing your creativity to light and aiding you in dispelling the myths of the difficulties of painting in this wonderful medium. Students will follow him in group demonstrations from photographs provided by Iain. More experienced painters are encouraged to work from their own photography. The class setting is very relaxed and accommodating to all with a broad mix of experience and skill levels represented. Most importantly, Iain allows as much time as possible for one on one instruction and critique. After all, a workshop should focus on the student and not how well the instructor can paint. In the end, it's about you and your experience and whether it will help you to continue on your artistic journey.

Artist website at <http://tiny.cc/jyoloy>.



### Ted Nuttall

4 Days | August 14-17

#### Painting the Figure from Photographs

Advanced Beginner to Advanced

CWA Members \$595

Non-Members \$655

Ted will demonstrate the techniques, and instill the confidence to enjoy painting people.

Artist website at [www.tednuttall.com](http://www.tednuttall.com).



### Nancy Collins – NEW!

2 Days | September 17-18

#### Everything About Colors

All Levels

CWA Members \$275

Non-Members \$335

Nancy will help you understand the characteristics of watercolors, and how to make them perform in the manner that suits you.

Artist website at [www.nancycollinsart.com](http://www.nancycollinsart.com)



### Lian Quan Zhen

3 Days | September 20-22

#### Free and Fun - Color Pouring and Paint Around with 3 Watercolors

Beginners to Advanced

CWA Members \$415

Non-Members \$475

Lian teaches basic techniques such as compositions and coloring, and his unique methods of "Color Pouring and Blending" and "Paint Around" (negative painting).

Artist website at [www.lianspainting.com](http://www.lianspainting.com).

For full workshop descriptions and online registration, go to:  
<http://www.californiawatercolor.org/classes.php>

For more information, email us at:  
[registrar@californiawatercolor.org](mailto:registrar@californiawatercolor.org)



# “The Color of Summer” Members’ Show

## Artists Reception and Awards

On Saturday, June 9, we had the opening and awards reception of our show, The Color of Summer, at St. Mary’s College Museum of Art. We were, and are, very happy to show our work in such a wonderful venue. We had a very nice, big crowd. We had three people that did demos of watercolor techniques—thanks Leslie, Linda and David. We had three people who stood by their paintings and talked about them for the audience—thanks Heather, Sue and Iretta. We had our photographers whose photos you’re now looking at—thanks Annegret and Sharon. We had our wonderful awards judge Gary Bukovnik join us for the afternoon... we sent a thank you to Skip Lawrence, our juror of selection. And we were welcomed by our hosts Lauren MacDonald and John Schneider—thank you both again.

*continued on page 11*





# “The Color of Summer” Members’ Show Award Winners

*continued from page 10*

It was a warm, sunshiny day and everyone had a good time. The following people had an even **better** time; the First Place prize went to Linda Sutton... the Second Place prize went to Michael Granger... the Third Place prize went to Heather Martin... and Honorable Mention prizes went to Leslie Wilson, Barbara Tapp, Rita Sklar and John Ediger. And for my part, I found out HOW much FUN it is to give people awards! I felt like Santa Claus!

*Michael Friedland*

*The museum at St. Mary’s hours of operation are Wednesday through Sunday from 10:00am to 4:00pm. The show is there until August 26.*

*St. Mary’s College Museum of Art is a prestigious museum located on the beautiful sylvan campus in Moraga, California. The museum is unique in Contra Costa County as the only one accredited by the American Association of Museums.*

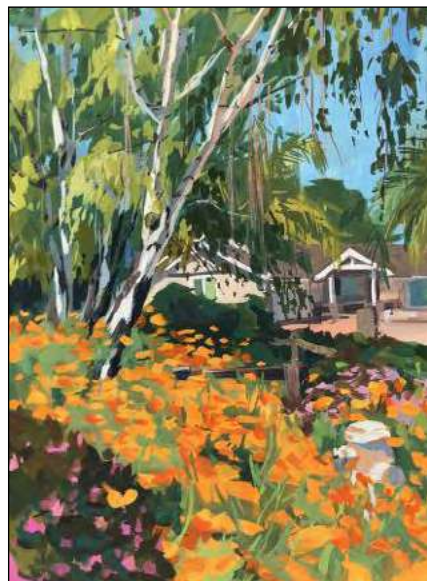
**St. Mary’s College  
Museum of Art**  
1928 Saint Mary’s Road  
Moraga, CA 94556

www.californiawatercolor.org  
tiny.cc/438yuy



**1st Place Award**  
Linda Sutton  
*Morning Maiden*

**2nd Place Award**  
Michael Granger  
*I Will Have the Water*



**3rd Place Award**  
Heather Martin  
*Poppies*



**Honorable Mention**  
Leslie Wilson  
*Rush Ranch 2*

**Honorable Mention**  
Barbara Tapp  
*A Dignified Retirement*



**Honorable Mention**  
Rita Sklar  
*Swim Team*

**Honorable Mention**  
John Ediger  
*Old Adobe*





# Plein Air - Bartholomew Park Winery

July 21, 2018, 10:00am to 1:00pm



We will paint from 10 am to 1 and then meet at the picnic tables under the trees, shown in the picture below, near the Wine Tasting room. Bring a bag lunch or pick up some food and wine in the tasting room.

This is the website for the Winery. <https://www.bartpark.com>

### Directions from San Francisco

Take Highway 101 North to Highway 37 East.

Take 121 North toward SONOMA/NAPA and turn left onto Highway 12 into SONOMA.

At the SONOMA PLAZA, turn right onto EAST NAPA STREET.

Turn left on 7th STREET EAST. At the next stop sign, turn right (veer to the left-most road) onto VINEYARD LANE and follow it to the gates of the winery.

### Directions from Sacramento

Take Highway 50 West to Interstate 80 West.

Take the CA-12 Exit towards NAPA/SONOMA.

On Highway 12, make a right onto Highway 29 North.

Follow Highway 29 for 5 miles and turn left onto Highway 12/121 towards SONOMA.

Turn right on NAPA ROAD.

Make a right onto 8th STREET EAST.

Continue for approximately 1.5 miles and make a left onto EAST NAPA STREET.

Take the first right onto 7th STREET EAST and at the next stop sign, turn right (veer to the left-most road) onto VINEYARD LANE and follow it to the gates of the winery.



 Click for Google Map to Bartholomew Park Winery:  
[tiny.cc/8g5yuy](https://tiny.cc/8g5yuy)

# CAA/CWA Joint Plein Air – St. Mary's

## June 21, 2018 – Gallery

All I can say is... we had a BEAUTIFUL day to paint at St. Mary's College in Moraga! The day could not have been better and our excited participants had a marvelous time.

After we painted out in nature, we toured the CWA "Color of Summer" show at the Museum of Art. I heard many enthusiastic comments regarding the show. Included in photos of our day is a photo of a huge poster the museum made of Phyllis Brady's "Beach Girl." Phyllis is a CAA/CWA member.

The show continues through August 26. Make sure you take the time to go see it!

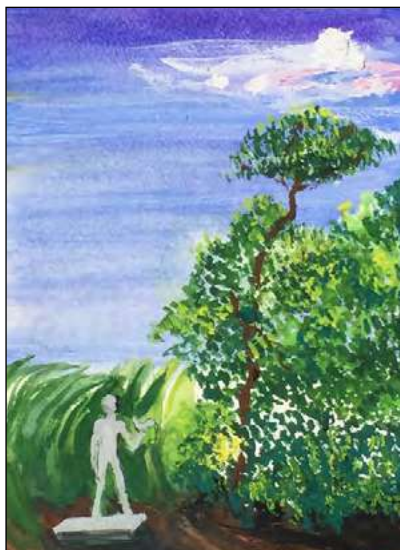
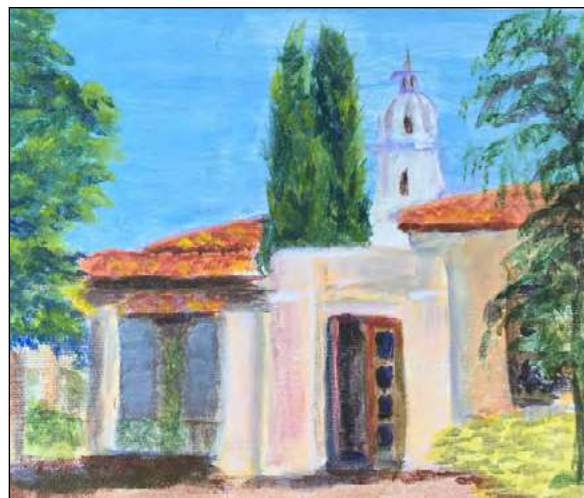
### CAA Attendees:

Mary Frances Crabtree  
Denise Hillman  
Renaye Johnson  
Cathy McNutt  
Karen Nakkerud  
June Vega  
Sal Vega

### CWA Attendees:

Karen Newman  
Harvey Steinhaus

*Carol Husslein*  
CAA/CWA



*continued on page 14*



continued from page 13

### membership/ data manager

Mail all changes of address,  
phone number and email to:  
cwa.data@gmail.com  
c/o CWA P.O. Box 4631  
Walnut Creek, CA 94596

### monthly meetings

Meetings are held the third  
Wednesday of each month  
(except June and December)  
7:30pm

#### Center for Community Arts

111 N. Wiget Lane  
Walnut Creek, CA  
(NW corner of Wiget Lane and  
Ygnacio Valley Road).



### cwa workshop info

Wendy Oliver  
925.280.1944

### e-newsletter info

To receive this newsletter  
electronically please send a note to  
our Data Manager with the email  
address at which you wish  
to receive the newsletter.

### Plan Ahead!

Submissions for the newsletter  
must be received by the 15th of  
the month prior to publication!

August Newsletter  
Deadline is July 15th

Send to newsletter@californiawatercolor.org

## CWA Board of Directors

President	Carol Husslein 925-935-6779 President@californiawatercolor.org
Vice President/Membership	Annegret van Gemenen Membership@californiawatercolor.org
Co-CWA Member Shows	Michael Friedland CaliforniaShows@californiawatercolor.org
Co-CWA Member Shows	Craig Moline 415-806-0907 CaliforniaShows@californiawatercolor.org
Communications Director	Deborah Graffuis 925-939-7626 Communications@californiawatercolor.org
Director of Programs	<b>VOLUNTEER NEEDED</b> Programs@californiawatercolor.org
Budget Director	Sandi Sherwood 925-825-7017 BudgetDirector@californiawatercolor.org
Co-Director National Exhibition	Ruth Miller 925-837-2818 National@californiawatercolor.org
Co-Director National Exhibition	Iretta Hunter National@californiawatercolor.org
Secretary	Leslie Wilson Secretary@californiawatercolor.org
Director Community Outreach	Sheila Cain 510-845-0863 Outreach@californiawatercolor.org
Director Workshops	Wendy Oliver 925-280-1944 Workshops@californiawatercolor.org
At Large	Sandra Morea 925-984-3226 Sharon Hopkins 925-935-3701 AtLarge@californiawatercolor.org

## CWA Staff

Membership/Data Manager	Samantha McNally
Newsletter Editor	Patricia Rosa
Bookkeeper	Melissa Alva

## CWA Volunteer Committees

Audio/Visual Set Up	<b>VOLUNTEERS NEEDED</b>
Community Outreach	Sheila Cain Victoria Bianco Georganne Zaro-Eddy Marianne Elliott Maggie Metcalf
Mail Distribution	Sandi Sherwood
Hospitality	Sandra Morea <b>ADDITIONAL VOLUNTEER NEEDED</b>
Co-Video Librarians	Terrie Moore (Chair) Barb Bochenek Joe Tringali
Plein Air	Samantha McNally
Panel Rental	Carol Husslein
CWA Webmaster	<b>VOLUNTEERS NEEDED</b>

## Dale Laitinen's Finished Painting – Watercolor on Aquabord

Dale, our May 16, 2018 guest artist demonstrated watercolor on Aquabord to a captivated audience. We were all eager to see how to get the beautiful effects Dale gets on Aquabord and we were NOT disappointed!



**Unfinished**



Dale kindly sent a photo of his finished painting, so you be the judge.

Annegret van Gemenan supplied the photo of the unfinished painting for us to see the difference between the two photos.

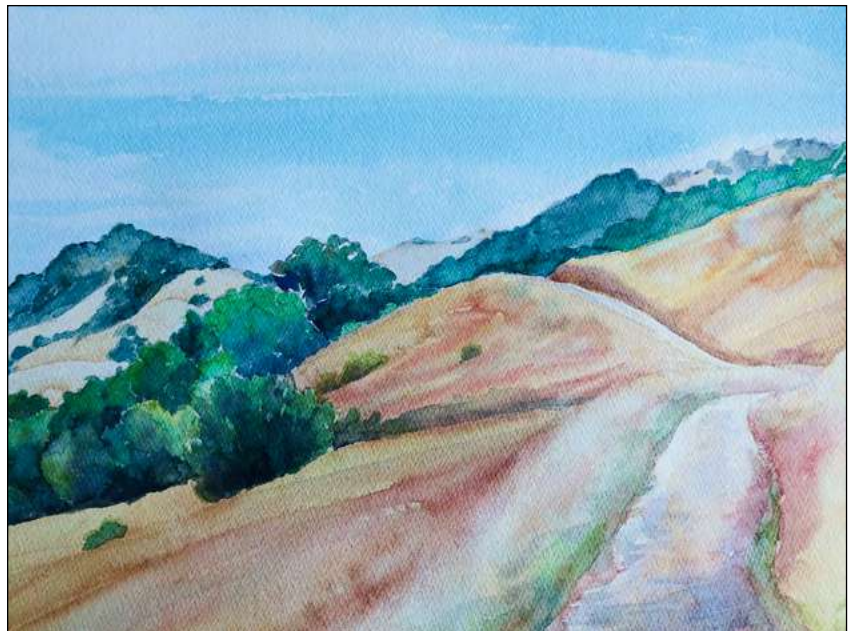
**Finished**

For more information about Dale:

Website: <http://DaleLaitinen.com>

Email: [artist@DaleLaitinen.com](mailto:artist@DaleLaitinen.com) or [dale@DaleLaitinen.com](mailto:dale@DaleLaitinen.com)

## Plein Air – Curry Point, Mt. Diablo June 23, 2018 – Gallery



# CWA 2018 Calendar

## Meetings & Demos

January 17	Daniel Smith
February 21	Steve Rogers
March 21	Jeannie McGuire
April 18	Salvador Valencia
May 16	Dale Laitinen
<b>June—Summer Break</b>	<b>NO MEETING</b>
<b>July 18</b>	<b>Iain Stewart</b>
August 15	Ted Nuttall
September 19	Lian Quan Zhen
October 17	Taryn Curiel
November 21	Giving Thanks to Art... Watch, Listen and Learn!
<b>December—Winter Break</b>	<b>NO MEETING</b>

## CWA Workshops

January 26-27	Michael Reardon
February 19-22	Steve Rogers
March 19-22	Jeannie McGuire
April 18-21	<i>Cancelled</i> - Eric Wiegardt
<b>July 19-21</b>	<b>Iain Stewart</b>
August 14-17	Ted Nuttall
September 17-18	Nancy Collins
September 20-22	Lian Quan Zhen

## Plein Air

March 24	Briones Regional Park
April 21	Viansa, Sonoma
May 11 (Friday)	Blake Garden
June 23	Curry Point, Mt. Diablo
<b>July 21</b>	<b>Bartholomew Park Winery</b>
August 18	Benicia
September 22	Little Farm, Tilden Park
October 20	Pacifica

